



29/04/25

WOUND PRODUCT SELECTION

THE SUNSHINE COAST



NURSES FOR
NURSES
NETWORK



WOUND
THERAPIES

WHAT THIS WORKSHOP IS ABOUT



Are you confused with the different wound products in your dressing cupboard? Which ones have similar modes of action? Do you feel limited in your knowledge and want to know more? Does one dressing fit all?

This workshop explores some of the most common dressings available and their mode of action. It will explore different product categories so you can choose the right product if your "favourite" is not available.

The second part of this workshop focuses on assessing & dressing and equipping your cupboard to meet your dressing needs.

LEARNING OUTCOMES

At this workshop, participants will:

- Explore different product categories and their mode of action
- Gain an understanding of tissue type and dressing selection
- Explore new products available in the Australian health care market
- Investigate how to review your product cupboard to improve wound healing outcomes in your facility

YOU WILL ALSO LEARN

- The different types of wound products and their mode of action
- How tissue type affects wound dressing selection
- What products hydrate, protect, and maintaining a moist wound environment
- Find the moisture balance - not too dry but not too wet
- Managing non-viable tissue
- Fibres, foams and everything in between
- Managing exudate - which products are highly absorbent
- What stock do you really need in the dressing cupboard

ITINERARY

29/04/2025 | 1230 – 1700

1230 – 1330: Wound Dressing Product Categories

Topics included in this session:

- Exploring different product types and their mode of action
- Wound dressings & tissue type.

1330 – 1445: Assessing & Dressing - Part 1

Topics included in this session:

- Exploring products that hydrate, protect & maintain a moist wound balance
- Finding the balance – dress and protect, not too dry not too wet.

1445 – 1500: Afternoon Tea



ITINERARY CONTINUED

1500 – 1600: Assessing & Dressing - Part 2

Topics included in this session:

- Managing non-viable tissue wounds with higher exudate levels
- Fibres, foams and everything in between!

1600 – 1700: Oh my, the exudate is very high - Exploring highly absorbent wound dressing products

Topics included in this session:

- Stocking my dressing cupboard
- Planning for all wound types
- Where to start, what do I need

“Just wanted to say thanks for an amazing weekend of education. Seriously was the best conference I have ever attended, as well as the best value for money, the price for the conference was unbelievable. I have attended conferences twice the price and have come away feeling disappointed.

Louise is not only an amazing, engaging and captivating speaker but her knowledge is extensive, relevant and up to date. What a privilege to have met her.

My colleague and I who attended are both NPs in a busy mixed ED and are often faced with questions from medical and nursing staff in regards wound management. We both now feel empowered and confident to provide advise on wound care and wound dressings that is best for our patients.”

Kerri, Unpicking the Mysteries of Wound Management Products

OUR PRESENTER

Louise Webber, Masters Nursing Science (Nurse Practitioner), BA (Hons), RN

Louise has over 25 years of experience in Wound Management and established her Private Practice (Wound Therapies) in 2014.

She has worked in several public hospitals and Community settings in Australia and overseas. She currently works collaboratively with several Aged Care Providers and private hospitals and runs her specialist community wound clinic.



Louise was previously an Honorary Clinical Fellow for Australian Catholic University and continues to participate in research projects with a leading Queensland University.

Louise is passionate about wound care and strives for best practices. Additionally, she has participated in several international working groups for Pressure Injuries and Leg ulcers and frequently presents at workshops, conferences & seminars.

She is a mum of two, loves the Sunny Coast lifestyle and attempting to play golf!

REGISTRATION COSTS

\$260.00 incl GST (NB: Registration cost doesn't include travel, accommodation, or travel insurance.)

VENUE

Maroochy River Golf Club

374-514 David Low Way, Bli Bli | (07) 5373 1000

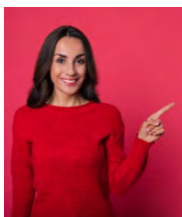
Enjoy the views of the spectacular golf course with the iconic Mt Coolum on the horizon. The Maroochy River Golf Complex is the home of the Maroochy River Mini Golf, a million dollar tourist destination and the only one of its kind on the Sunshine Coast.



INCLUSIONS

- A workshop program based on current best practice
- A presenter who is excited to be able to share her skill, knowledge, and passion with attendees
- A workshop pack that includes a notepad, pen, and additional information to support a fantastic workshop experience
- A delicious afternoon tea
- A workshop transcript that identifies each session including the session synopsis and session presenter
- A Certificate of Completion identifying the CPD hours for you to include in your CPD Evidence Portfolio

INSURANCE



The Nurses for Nurses Network and Education at Sea strongly recommends customers take out travel insurance at the time of registration for an event to cover any unforeseen circumstances that may prevent them attending and thus incurring any financial loss.

DISCLAIMER

The opinions and statements of facts expressed in the Papers in these proceedings are those of the Authors and do not necessarily represent those of the Nurses for Nurses Network (NfNN), the editors, the organising committee or the supporters of this Conference. The organisers can accept no responsibility for errors or omissions in the individual papers. Sessions are correct at time of publication. Sessions are subject to change without notice due to circumstances beyond the control of the organisers. NfNN reserves the right to alter charges, cancel, postpone, change or withdraw the product or service at any time.

CONDENSED ITINERARY

29/04/2025

1230 – 1330: Wound Dressing Product Categories

1330 – 1445: Assessing & Dressing - Part 1

1445 – 1500: Afternoon Tea

1500 – 1600: Assessing & dressing - Part 2

1600 – 1700: Oh my, the exudate is very high - Exploring highly absorbent wound dressing products

CONTACT DETAILS

The Nurses for Nurses Network
07 4151 3884 | enquiries@nfnn.com.au
M-Th: 0900 - 1500

Scan to Book Online

